

Principal: Mr. D. Cullen
2 Whitebridge Road
Ballygawley
Co. Tyrone
BT702JH
Tel.: - 028 855 68621
Mob: 07827444215



Email:
info@stmarys.ballygawley.ni.sch.uk

Website:
www.stmarys.ballygawley.org

Oct 2019

Nut Allergies

We currently have a number of pupils in our school with severe nut allergies. Exposure to nuts or traces of nuts, can seriously put these pupils' health at risk. Staff have undergone training to deal with emergency situations where Epipens have to be administered. To this end, we ask that parents are vigilant in ensuring that food containing nuts, or traces of nuts are not sent to school. Baked foods also pose a risk, if nut content, has not been checked. We thank you for your cooperation regarding this.

Fundraising Cycle

Thank you to everyone for their support and attendance on Sunday 22nd. Despite the inclement weather, it made the event very special in seeing our whole school community coming together to celebrate the achievement. Thank you to everyone who has sent in their sponsor money. We would ask that all families have any remaining sponsor money sent in by Friday of this week. Thank you for all your efforts in making this a great success. We will be announcing the total raised in the coming weeks.

Forest School

Mrs Hagan's Class will visit Ballygawley Playing Fields on Wednesday for the Mid Ulster Council Forest School Activity. Pupils should wear their navy tracksuit bottoms, blue PE shirt and School Jumper. Please bring a coat and suitable outdoor footwear for this visit. Pupils will be back at school before 2pm.

Cross Country Events

9th October Flahavan's Cross Country Primary League - Ballygawley Playing Fields

PE clothing and a towel need to be brought in for all Cross Country events. Thank you

After Schools

Thurs 10th Oct - 21st November

Sportitots P2 (Open to all Year 2 pupils) 2pm - 3pm (Pupils must be collected at 3pm)

Multisports P3/4 (Open to all Year 3 and 4 Pupils) 3.15pm - 4.15pm (Pupils must be collected at 4.15pm)

Cost for After-schools is £12 for a 6 week block (to be paid before first session thank you)

Drama for the first half of term 1 is being paid for by the school. Drama will cost £6 for Nov/Dec.

Year 1 School day

Well done to our Year 1 Pupils, who are now fully integrated to school with their school day beginning at 9.15am and ending at 2.00pm. This will include canteen time. Pupils will either bring their own packed lunch or take canteen dinners. Any dinners taken during the week must be paid for each **Monday** at the beginning of the week: **cost per day £2.60**

Attendance Matters

All pupil absences must be recorded by the school daily. We would ask all parents to notify the school, preferably in writing or by contacting the school via text or phone, as to the nature of the absence. This must be done within 5 days of the initial day when your child is not at school. All unexplained absences are recorded and are subject to an Educational Welfare Officer Audit carried out termly. Please find enclosed leaflet from DENI.

Data Forms

It is vitally important that all data forms being submitted to school are checked for accuracy. The information given is the schools only means of contacting the correct person in the case of an emergency. Allergies if any should be stated clearly and forms need to be returned ASAP before the 4th October. Consent forms attached, are to be returned by Friday 4th October also.

Morning Mass

All pupils and staff will be attending Mass on Thursday morning this week. Each First Thursday of the month 2 classes, on a rota basis, will continue this practice as part of our school's religion program.



Accelerated Reader/ Mathletics

The AR program is continuing throughout year 4-7. The program has already begun in earnest. $\frac{1}{2}$ termly targets have been set and reading is built in to each child's homework routines.

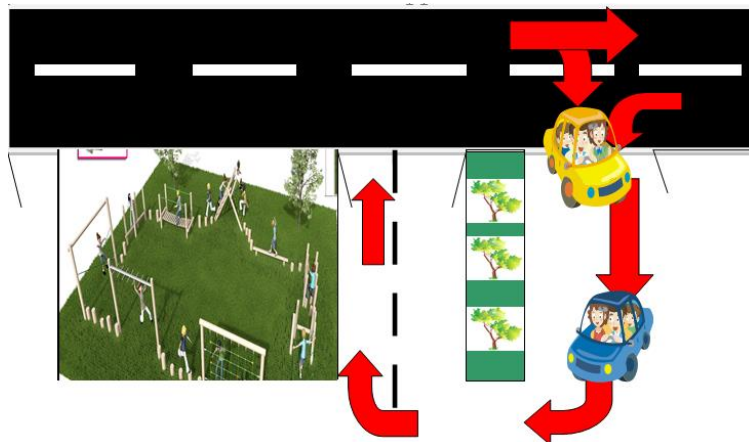
Year 3-7 pupils have been accessing **Mathletics** since September. This is a very useful tool both at home and school to not only challenge, but also to support your child with mathematical concepts.



Stop and Drop

In the interests of health and safety, all parents collecting pupils via car are to make their way to the green gate in the school playground where the children will be waiting. No child will be allowed to enter the car park without adult supervision.

Cars arriving should enter via the car park gate and form a queue exiting the large school gate. Cars should 'not block' the gate entrances or 'clog up' traffic outside the school grounds. If the queue is long, please turn at the Knock Crescent park entrance.



We will have a Halloween dressing up day on Friday 25th October



School Text Service.

Anyone who has not received recent texts from St. Mary's PS School Mobile should forward their name to 07827444215 and it will be stored for future texting.



Dinner Money Arrangements

All dinner money must be given to the class teacher on a Monday in advance of dinners being taken during the week. Cost per day £2.60

All pupils should bring in their coats each day. All items of clothing should have their names on them please.